

RNI No. 31940/77. Reg. No. MCS/124/2015-17. Date of Publication: 1st of every month. Posted at Patrika Central Boring office, Mumbai-400001 on 13th and 16th of every month.

Inside Outside

THE INDIAN DESIGN MAGAZINE

www.insideoutside.in

ISSUE 379

MARCH 2017

₹100



**A bungalow in Vadodara by Dipen Gada
delicately skirts existing trees**

No cookie-cutter solutions!



New Delhi-based groupDCA's core values comprise four Ds: Dream of redefining spaces to enhance aesthetics and emotion. Design to deliver innovative excellence. Discover novel nuances by transcending the boundaries of space with socio-cultural relevance. And finally, Deliver ensuring quality and cost effectiveness through timely and operative project management.

TEXT: AMITA SARWAL

PHOTOGRAPHS: ANDRE J FANTHOMÉ, COURTESY GROUPDCA, NEW DELHI

Using the above as the guiding principles, the multi-generational family mansion in Panchkula, located on an 800 square yards plot and built over three levels, aims at addressing the growing need of the nuclear family. The client's brief was simple – an earthy, organic appeal aesthetically designed in a contemporary mode yet offering



Being lit up as the sun sets, the residence embodies the essence of being sustainable and organic in its architectural style.



the comfort of being rooted in familiar Indian tradition.

"The house is planned keeping practical conveniences in mind which means that in addition to the main public zones, the ground floor becomes the easily accessible domain of the elderly parents as well as locating the master bedroom and study here. The son's and daughter's

bedrooms are located on the first floor to allow them their private space. Using the second floor and terrace to maximum advantage, and accessed by a lift, this becomes the entertainment and relaxation zone for the family and their friends. It is equipped with state-of-the-art entertainment facilities, a bar and landscaped

terrace to enhance its joie de vivre!" describes Rahul Bansal, co-founder and partner, groupDCA.

"We wanted to create an element of surprise for the entrance to the house. This was done by placing the main doorway at the end of the driveway, past the front scenic garden, where a small landscaped area celebrates the

A blend of Gwalior stone and red terracotta clay bricks makes a cosy sit-out overlooking the front lawn.



The living room is a subtle yet classy amalgamation of a medley of hues from beige to soft browns.

entrance. The landscaping of all the outdoor areas, which are viewed from each of the internal spaces, draws attention by its clean, minimalist lines. These get integrated with the architecture in smaller pockets using pergolas, statues, decorative floor tiling and foliage collectively to create

a green calm, enhanced by mood lighting at night," continues Bansal.

Externally, local materials play an elemental role in defining the edifice. The blend of Gwalior stone and clay bricks (made in Chandigarh from red terracotta) are smartly edged around the

glazings, framing the windows and doors. This also breaks the cuboid form into dynamic geometric compositions.

Creating almost a monotone palette, the interior is a medley of hues from beige to soft browns – be it in the parquet wooden floors, teak furniture, ceiling panels and beams to the



The richness of the wooden staircase leading up to the first floor harmonises with the wood used for the informal dining table, all panelling and doors and windows.



upholstery and soft furnishing. Passive energy saving methods have been employed through insulated walls and ceilings. In the hot summers the internal temperature automatically falls. This is done through a ventilated earth cooling system that takes the hot air out

through an underground pipe which in turn removes heat by picking up moisture from the earth. This leaves behind cool air circulated through the air-conditioning system leading to a reduction in energy cost.

"In retrospect we have given our client what he wanted – a

humble, practical yet impressive abode. An understated yet elegant choice of architectural style, collection of furniture, matched woodwork and soft furnishings all blending to accomplish a subtle yet effective earthiness. The application of traditional construction tech-

The formal dining room flows into the living room. Subtle usage of fabrics, textures and art work blend seamlessly with the overall colour palette.



Founding partners Amit Aurora and Rahul Bansal.



NORTH ELEVATION

FACT FILE

TYPOLOGY Residential	ARCHITECTS / INTERIOR DESIGNERS Rahul Bansal (Principal) and Manish Makhija
PROJECT Residence	STRUCTURAL Pankaj Nanda (ME STRUCTURE), Panchkula
LOCATION Panchkula, Chandigarh	LANDSCAPE Somit Midha
CLIENT Harish Aggarwal	HVAC M/s AGILE Engineers, Chandigarh
SITE 800 sq yds	PLUMBING DSR Engineers Services
BUILT UP AREA 9735 sq ft /904 sq mtr	LIGHTING groupDCA
COMPLETION January 2016	FAÇADE groupDCA
ARCHITECTURAL FIRM groupDCA	

GROUND FLOOR PLAN

1. Front lawn,
2. Entrance verandah,
3. Entrance Lobby,
4. Drawing room,
5. Family lounge,
6. Master bed,
- 6a. Dress,
- 6b. Toilet,
7. Powder toilet,
8. Formal dining,
9. Lift, 10. Linen store, 11. Study,
- 11a. Parents' bed,
- 11b. Dress,
12. Toilet,
13. Kitchen,
14. Rear lawn,
15. Driver's room & toilet,
16. Shaft.



FIRST FLOOR PLAN

1. Lounge, 2. TV room,
3. Daughter's bed, 3a. Dress,
- 3b. Toilet, 4. Son's bed, 4a. Dress,
- 4b. Toilet, 5. Pantry, 6. Puja,
7. Guest bed-1, 7a. Dress,
- 7b. Toilet, 8. Guest bed-2,
- 8a. Dress, 8b. Toilet, 9. Lift,
14. Driver's room & toilet, 15. Shaft.



SECOND FLOOR PLAN

1. Entertainment, 2. Bar,
3. Toilet, 4. Pantry, 5. Shaft,
6. Front terrace, 7. Servant room, 7a. Servant toilet,
8. Rear small terrace,
9. Lift.





The family-cum-TV room has a relaxing ambience - ideal as a reading room too.

ologies links it back with the earth. The inclusion of art and indigenous crafts strategically positioned allow for a contemporary language of clean lines and uncluttered, functional and spacious zones," Bansal highlights.

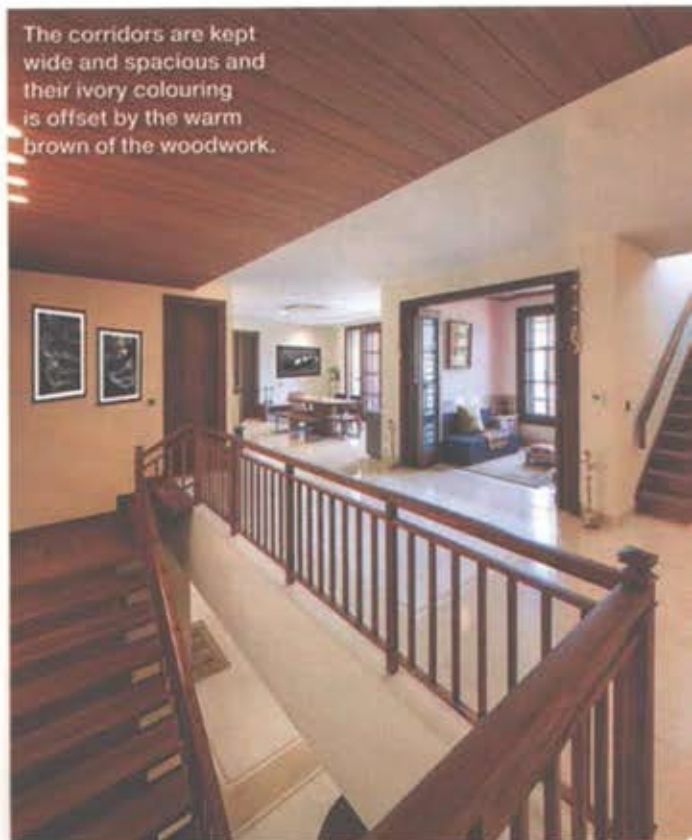
An architectural alliance

GroupDCA was founded in 1996 and, helmed by Rahul Bansal and Amit Aurora, has become one of the country's leading architectural houses due to their two-decade-old partnership. Their portfolio of accomplished architecture and design projects across diverse scales and typologies spans South Asia, Africa and the Middle East.

"Being aware of the void in the implementation and execution of our high standards

of work ethos, we set up DCA Workshop in 1997. This has proven to be a unique, single-window solution for design execution pan-India by our structured collaboration of synergies between clients, spaces and the designers. We offer appropriate, sophisticated design solutions and the client gets excellent value in terms of cost and quality control. This is overseen by an in-house management team who source from the best fabricators, millworkers and experts. Today, apart from turnkey services for Indian clients, DCA Workshop has pioneered the implementation of global luxury brands, by partnering with them to set their footprint in India," details Bansal.

The corridors are kept wide and spacious and their ivory colouring is offset by the warm brown of the woodwork.





Another view of the family-cum-TV room shows an interesting ceiling feature in the form of wooden beams.



Floor-to-ceiling French windows allow ample daylight into the room.

A cosy corner makes a statement with an interesting assortment of furniture.





The home-office has a "studious" look with its wall-to-wall book shelf.

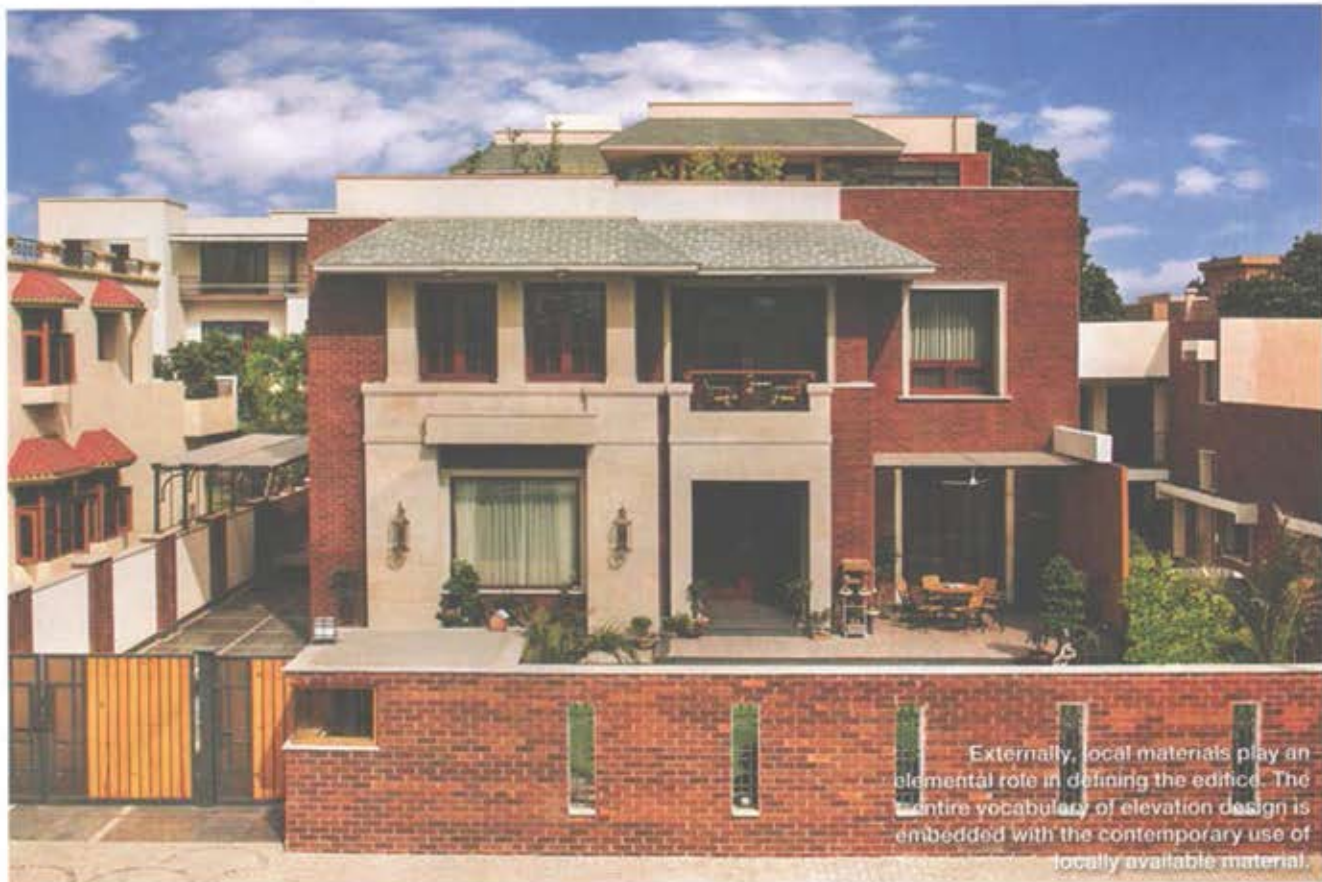
Group DCA has garnered a fistful of national and international recognition and awards in the residential, retail, hospitality and workspaces sectors. "Awards obviously give us recognition but also compel us to strive to achieve higher standards to compete in the design world. Keeps us on the top of our game," says Bansal.

As classmates since 1988 at the School of Planning and Architecture (SPA), New Delhi, they teamed up to execute various academic projects. Upon graduating in 1993 the duo moved on their individual paths to explore and enhance their own interests and diverse skill-sets and imbibe experiential knowledge from interning and working separately in leading architectural firms.



This sitting area on the 2nd floor is part of a state-of-the-art entertainment zone equipped with a bar and opening on to the landscaped terrace outside.

residence



Externally, local materials play an elemental role in defining the edifice. The entire vocabulary of elevation design is embedded with the contemporary use of locally available material.



A clever, functional use of wood as a design element in varied forms.

Aurora and Bansal's combined design philosophy is very basic: Keep it simple and design optimally. No over or extra designing. Keep it cost effective.

"Our focus has leaned strongly towards contextual and sustainable designs, inspiring young talent and nurturing human relations. Our intent is to deliver unique, context-specific, cost-effective and sensitive designs. groupDCA has an energised and enthusiastic team of over 40 professionals, each full of fresh ideas which helps us towards setting new trends some of which have become benchmarks in the design fraternity," says Bansal.

Aurora and Bansal's combined design philosophy is very basic: Keep it simple and design optimally. No over or extra designing. Keep it cost effective.

Simultaneously, each of them has their individual fields of specialisation. While Aurora

looks after the architecture and interiors of the commercial, residential and hospitality sector, Bansal concentrates on the upper-end luxury market and its implementation and specifically the architecture of upmarket residences.

Summing up, to ensure that each project is not a cookie-cutter solution, Aurora and Bansal make a conscious effort to use indigenous sustainable materials and technology that reinforce traditional Indian crafts and increase job opportunities for craftsmen while minimising any negative impact on the environment.

"We joined hands together with a vision to augment the design quotient in the country," concludes Bansal, voicing Aurora's thoughts as well. 