

Saturday, September 16, 2017

## Luxury amidst chaos!

By Marina Correa

Photography: Andre J Fanthome; courtesy the firm

Read Time: 1 min 30 secs



Group DCA designs a plush 11,889 sq. ft multi-level residence far removed from its chaotic neighbourhood of Pusa Road, New Delhi...

Verticality of the three-level bungalow on stilts defines volume rather than the sprawling site on ground. Projecting balconies, extending roofs with wooden undersides, recessed full-height glass windows and a 'green' entrance makes for a

Verticality of the three-level bungalow on stilts defines volume rather than the sprawling site on ground. Projecting balconies, extending roofs with wooden undersides, recessed full-height glass windows and a 'green' entrance makes for a dynamic landscaped composition.



[Add caption](#)

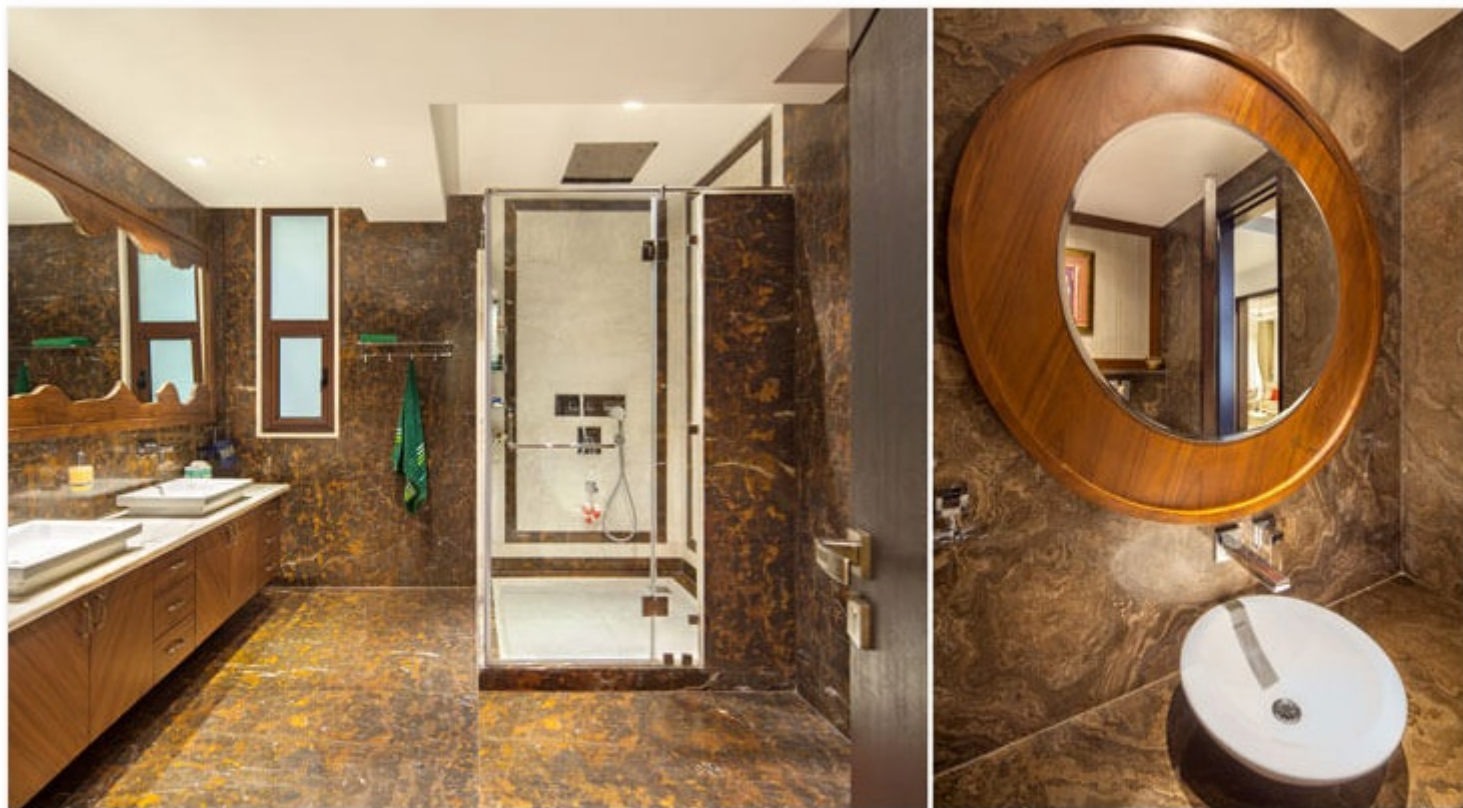
Built for a small family, the façade is contemporary as compared to its more classical interiors. Though the residence is a luxurious abode, it does not come across as over-the-top, showing off the firm's capability in balancing flamboyance with modesty. For instance, the double-height family lounge is juxtaposed against casual furniture; plush drawing-dining area against a subdued colour palette; elaborate patterns on screens and railings against simple lines in the façade etc.





Furthermore, use of natural materials and textures like Brazilian wood and Portuguese limestone for the elevation allude to an understated style and warmth. Slatted rough-finished stone and stone mosaics on the boundary wall add character.





The highlights of the project are its landscaped courts along with terraces and balconies and the double-height family lounge that harnesses light and ventilation into the home. Free and easy movement along circulation paths and a dark Emperador-clad stairwell add on to the spacious and luxurious vibe.



The outdoor landscape becomes an extension of everyday living and opens up into a large gathering space for parties. The vast openness of the premises against the backdrop of greenery amidst the crowded city earns this three-level residence a unique luxury tag.

**Fact File:**

**Client:** Gujral & Sons

**Design Firm:** Group DCA

**Principal Designer/Architect:** Rahul Bansal and Amit Aurora

**Area:** 11,889 Sq.ft.

**Location:** Karolbagh, New Delhi