

ELEGANT | EXPRESSIVE | LUXURY

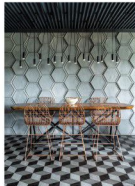
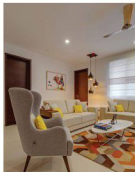
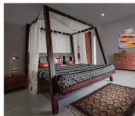
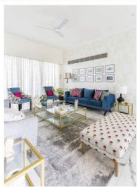
50 APARTMENT INTERIORS E-BOOK

INDIA'S BEST APARTMENT HOME TOURS

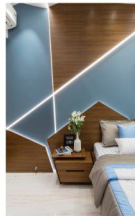
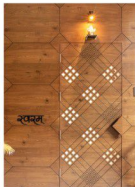
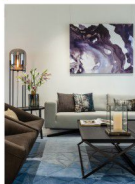


THE
ARCHITECT'S
DIARY

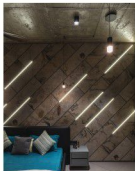
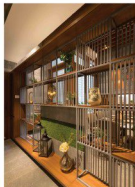
EXPRESSIVE



ELEGANT



LUXURY



EXPRESSIVE

QUIRK STUDIO- PG.12

THE COMPANY OF DESIGN- PG.20

RUSHINWALA ARCHITECTS- PG.26

STUDIO COURSE-PG.36

THE DESIGN ALLEY-PG.42

YELLOW DOOR ARCHITECTS-PG.52

MUSELAB-PG.62

AMUZING INTERIORS-PG.74

INCREATION ASSOCIATES-PG.82

ATELIER INTERIORS-PG.94

DECODE DESIGN-PG.104

THE CROSS BOUNDRIES-PG.116

ZED DESIGNS-PG.126

GROUP DCA-PG.138

TEJAL MATHUR-PG.148

MS DESIGN-PG.162

MISA ARCHITECTS-PG.176

AUM ARCHITECTS-PG.192

SPACE PLUS-PG.204

SARANSH -PG.212

ELEGANT

GAURAV KHARKAR AND ASSOCIATES- PG.226

LOC DESIGN HOUSE- PG.238

STUDIO 7-PG.246

STUDIO M-PG.254

KOMAL SACHDEV DESIGNER AND PLANNER- PG.262

IGINITUS ARCHITECTURAL STUDIO-PG.272

ADDA ARCHITECTS-PG.280

PAVAN INFRATECH-PG.298

THE SPATIUM INTERIORS-PG.310

WE DESIGN STUDIO-PG.324

GHORICHA ASSOCIATES-PG.334

PRAYOG DESIGN STUDIO-PG.342

STUDIO OSMOSIS-PG.354

MIRARI DESIGN STUDIO-PG.364

F+S DESIGNS-PG.378

AMIT SHASTRI ARCHITECTS & INTERIOR DESIGNER-PG.388

HS DESIGN-PG.396

LIMITED EDITION DESIGN STUDIO-PG.408

STUDIO YAMINI-PG.420

INTRINSIC DESIGNS-PG.432

LUXURY

LITTLE BOX DESIGN STUDIO - PG.444

AMAZING INTERIORS - PG.460

KNS ARCHITECTS - PG.478

ARTIKA INTERIOR DESIGNERS - PG.490

AKARI DESIGN STUDIO - PG.508

RUST THE DESIGN STUDIO - PG.522

SAIMA SALIM INTERIOR DESIGN
STUDIO- PG.532

THE INTERIOR WORKSHOP - PG.542

SANJYT SYNGH - PG.558

DIPEN GADA AND ASSOCIATES - PG.566

DESIGNER - PG.578

THE DESIGN CODE - PG.588

50 best apartment Interiors is a collection of most amazingly designed apartments around the country, with this E-Book we believe to provide design inspiration to the readers. well-curated designs from the most innovative and established design firms.

Each of the projects is carefully selected on the based on the Design standards & space defining factors. Also, the theme of the project and functional fundamentals are considered with their uniqueness.

EXPRESSIVE

ELEGANT

LUXURY



Fast growing cities and exchange of different culture have shaped the elements in decor, today the design has taken just the place of just bare necessity, it's about reflection of individual personality. Standard of living has made a major impact emphasizing on hiring a design firm to assist to bring life the home.

This E-book features essential collection of best apartments in India, design firm are carefully selected to be face and demonstrate the creative aspect of interior design.

E-book can serve an inspiration to the upcoming Designers to explore various possibilities, ultimately grow to become a better professional as well as serve the purpose of designing which is a HOME to a family exploring the comfort and cultural aspects.

This E-book is easily accessible which can be used and referred as and when required.

We hope to upgrade the standards of society and help understand the value of a creative thoughtful design.

Curation of project are majorly prioritize the design element, quality of execution as well as documentation, E-book illustrates different way of design as well as selection of theme and material palette. we are very glad to put them all together creating various options and demonstrate the vivid ideas.

SIDDHARTH BHAYANI
FOUNDER- DIRECTOR
WWW.THEARCHITECTSDIARY.COM

CRAFTING INDIVIDU- ALISTIC

JINDAL RESIDENCE GROUP DCA

Project : Jindal Residence
Location: Punjabi Bagh west, New Delhi.
Carpet area: 2530 SQ.FT.
Project Lead: Amit Aurora, Rahul Bansal
Design Team : Vini Sam, Pritha Mitra
Photography: ©Kapill Kamra (The Portrait)



AMIT AURORA, RAHUL BANSAL

The design of the Jindal Residence began as an exercise in trying to provide personally identifiable living spaces to all members of the client family—spanning three generations—under one roof. The primary challenge was to craft individualistic spaces within the home, while retaining a larger singular theme that would bind the whole residence together.



FORMAL LIVING ROOM

The residence is housed on a single longitudinal floor-plate and is accessible through a staircase and an elevator on its longer side. Inheriting a site with only the floor slabs, there was enough opportunity to make an intervention to carve out a unified space. The main entrance opens into a foyer that provides access to the drawing room, and to a corridor that acts as the circulation spine of the residence.

Another challenge was designing around an existing floor-plate structure—when the client bought the floor-plate, the external walls had already been placed and the internal walls were in the process of being put up. This structure, group DCA found, was lacking adequate provision of natural light and air for the interiors. Hence, the floor-plan has been modified in an effort to optimize daylight penetration and cross-ventilation. A central cut-out is devised to bring natural light into the semi-public kitchen and dining space. Additionally, a verandah is provided as an extension to the drawing room, and indoor plants were placed within the house to encourage engagement with nature.



KITCHEN

This corridor forms a central axis and runs for almost the entire length of the residence; it opens up into a family lounge and open kitchen-dining in the heart of the house, while its ends are marked by entryways into bedrooms.

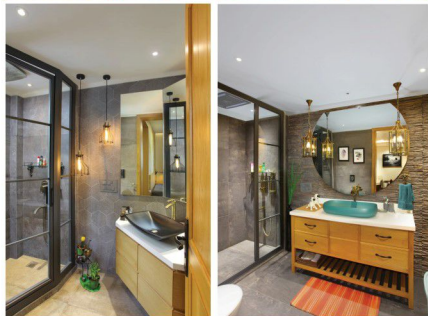


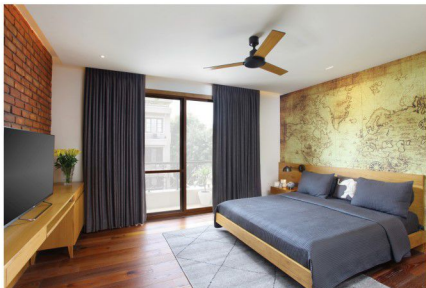
BEDROOMS

Following the brief from the client, distinctive personalized elements are added in bedrooms to reflect the individual interests and sensibilities of its users; this includes a large world-map backdrop in the teenaged boy's room, and a ceiling-hanging jhoola (swing) in the teenaged girl's room. The larger décor, however, carries the same materiality throughout the residence to weave a metaphorical thread around the home.



**MINIMAL USE OF
FURNITURE AND
SUBTLE PALETTE.**





BEDROOMS

Natural materials and finishes—exposed brick walls, stone flooring, sandblasted wood—are employed and used in tandem with contemporary art and furniture pieces to impart a sense of eclecticism. The drawing room features custom-designed products such as a low-hanging hemispherical chandelier, a cast Aluminium column with a European aesthetic, and a wall installation with multiple circular mirrors. One wall in each room is finished in exposed brick to carry forward the material palette, and to tie the spaces with a common thread, albeit in different colours.