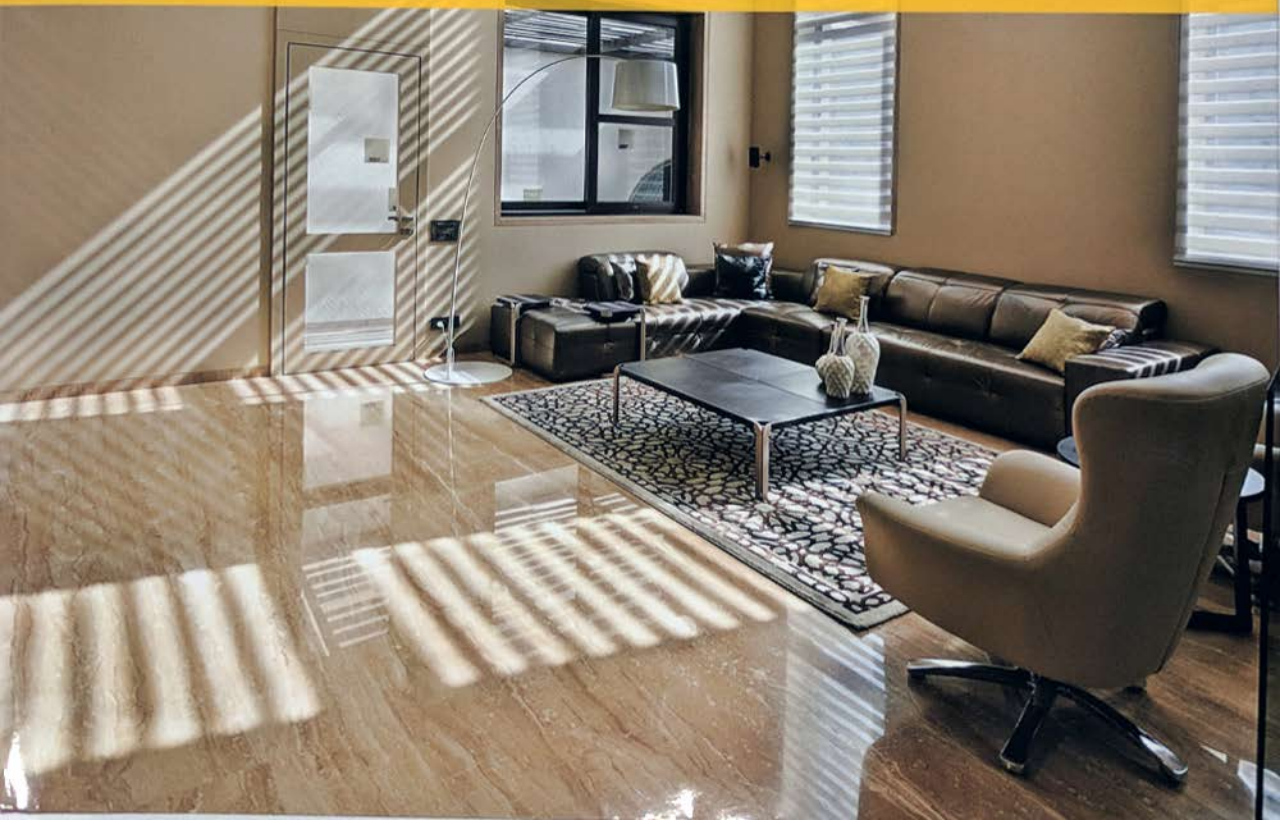


# LUXURY INDIAN INTERIORS

PERSPECTIVE OF THE NEW INDIAN AESTHETICS







The interior decor gives off a modern, yet classically elegant vibe.

## ARORA RESIDENCE

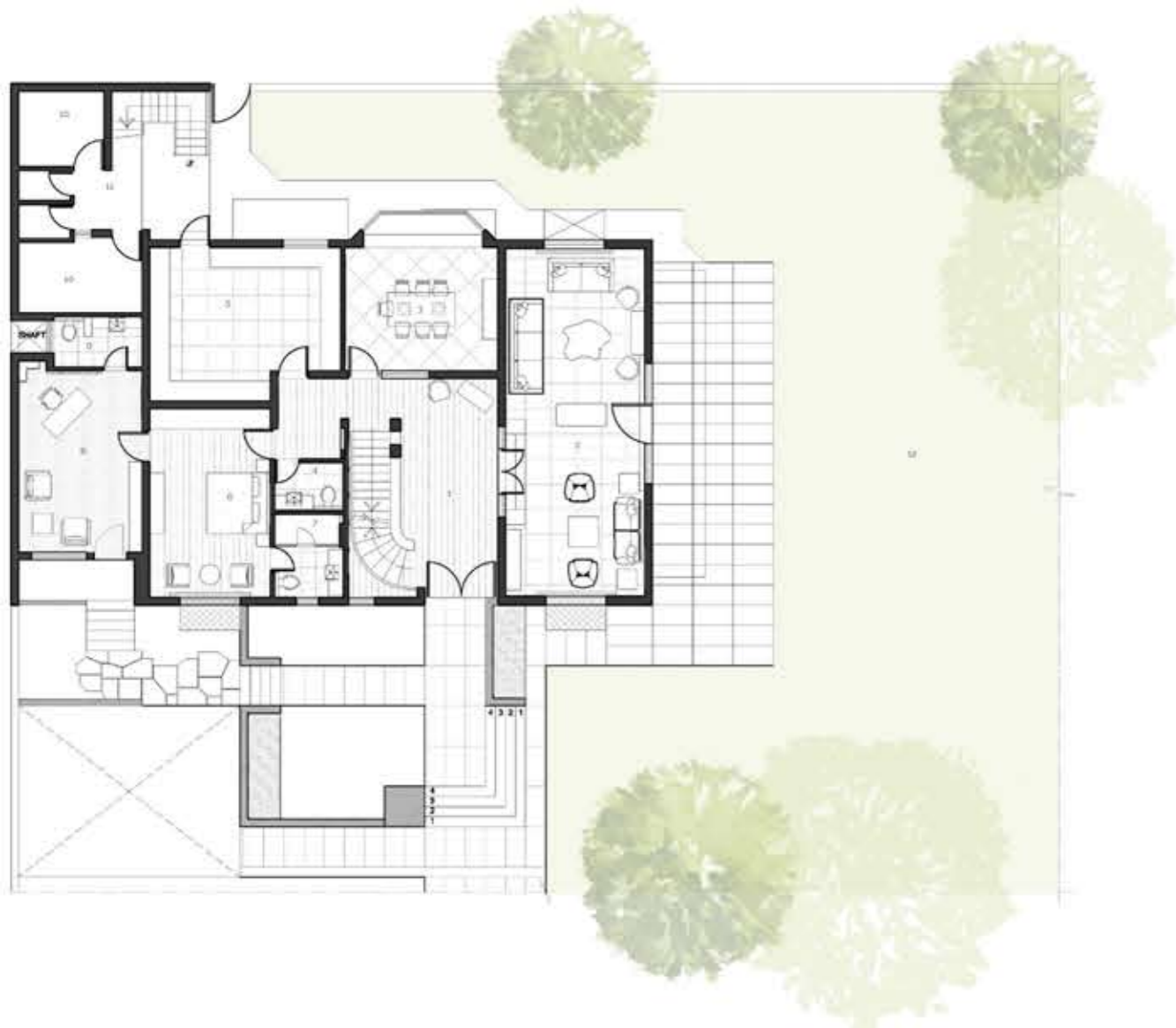
This residence's aesthetic is a fusion of multiple design styles and products that are all deeply divergent but come together to create a unique balance.

Location **New Delhi**  
Design Firm **group DCA**  
Built-Up Area **6870 sq ft**  
Completion **January 2014**

It's not often that a client approaches a designer with a free rein to experiment and fashion an unusual space that is far removed from any of the current fads in interior design. When such a rare opportunity does materialize, it can sometimes unsettle the designer if the design intent seems to be veering towards maximalist excess. The new owner of this residence, which is located in the posh settlement of Sainik Farms in south Delhi, explained the idiosyncrasies of his unconventional artistic taste to the design team and conferred his complete trust on them to harmonize the finished whole into a comfortable and inviting home. At the time of commission, the house was completely built and the owner wanted to make only minimal structural changes. Spread across two floors and a basement, the floor plan is organised such that the living, the dining and kitchen spaces, are located on the ground floor along with the mother's room and a home office/library for the owner with a separate entrance from the front porch. The private spaces including the master and children's bedrooms are housed on the first floor. The basement is furnished as an entertainment zone, including a bar, a television lounge, a gym/activity area and a guest bedroom.

The major challenge that architects faced while designing the project was to mend the existing false ceiling with the new design. A decision was made to retain the existing doors and windows. The bathroom features a classic vanity with a huge antique mirror; black granite is used for the counter-top and the wash basins. Another prominent change involved replacing the plain staircase railing with a trendy mild steel sheet railing. The aesthetic of the house can be described as a fusion of multiple design elements merging into one space while simultaneously celebrating each object's individuality—a marriage of ideas, enhancing and complementing one another, which births a unique balance. This approach of embracing varied sensibilities is evident when one enters the double-heighted entry foyer, where a wall decal with the silhouette of a tree on a grey background looms large against the staircase. The treads of the stairs are treated with a burnt wood finish, adding to the visual feast that greets the eye. A large light fixture suspended from the first floor ceiling descends to multiple heights along the volume, completing the composition. The home abounds with an array of textures, colours, and materials. Creative use of mild steel sheets is made in several locations from the name-plate to the staircase railing, the steps fascia, and the bar unit. The basement and the office on the ground floor features a plain cement concrete flooring. Unfinished raw wood can be seen in most of the furniture pieces in the house. Digital wallpapers with bold patterns feature in the living room, the study, and daughter's room. Rough textured white paint in the study adds to the vintage ambience of the room. Another eye-catching element is provided by carved, white wooden frames that are hung from the ceiling. Used beer and whisky bottles are recycled to make a screen in the bar area.





#### GROUND FLOOR PLAN

1. Entrance Lobby
2. Living Room
3. Dining Room
4. Powder Room
5. Kitchen
6. Mother's Room
7. Mother's Room Toilet
8. Study
9. Toilet
10. Servant's Room
11. Servant's Toilet
12. Lawn



#### FIRST FLOOR PLAN

13. Lobby
14. Master Bedroom
15. Walk-in-Wardrobe
16. Master Toilet
17. Son's Bedroom
18. Walk-in-Wardrobe
19. Son's Toilet
20. Daughter's Room
21. Walk-in-Wardrobe
22. Daughter's Toilet
23. Servant's Room
24. Servant's toilet
25. Balcony



Left: Common areas are highlighted by traditional accents.

Right: Subdued lighting enhances the spatial experience, and creates a warm ambience.







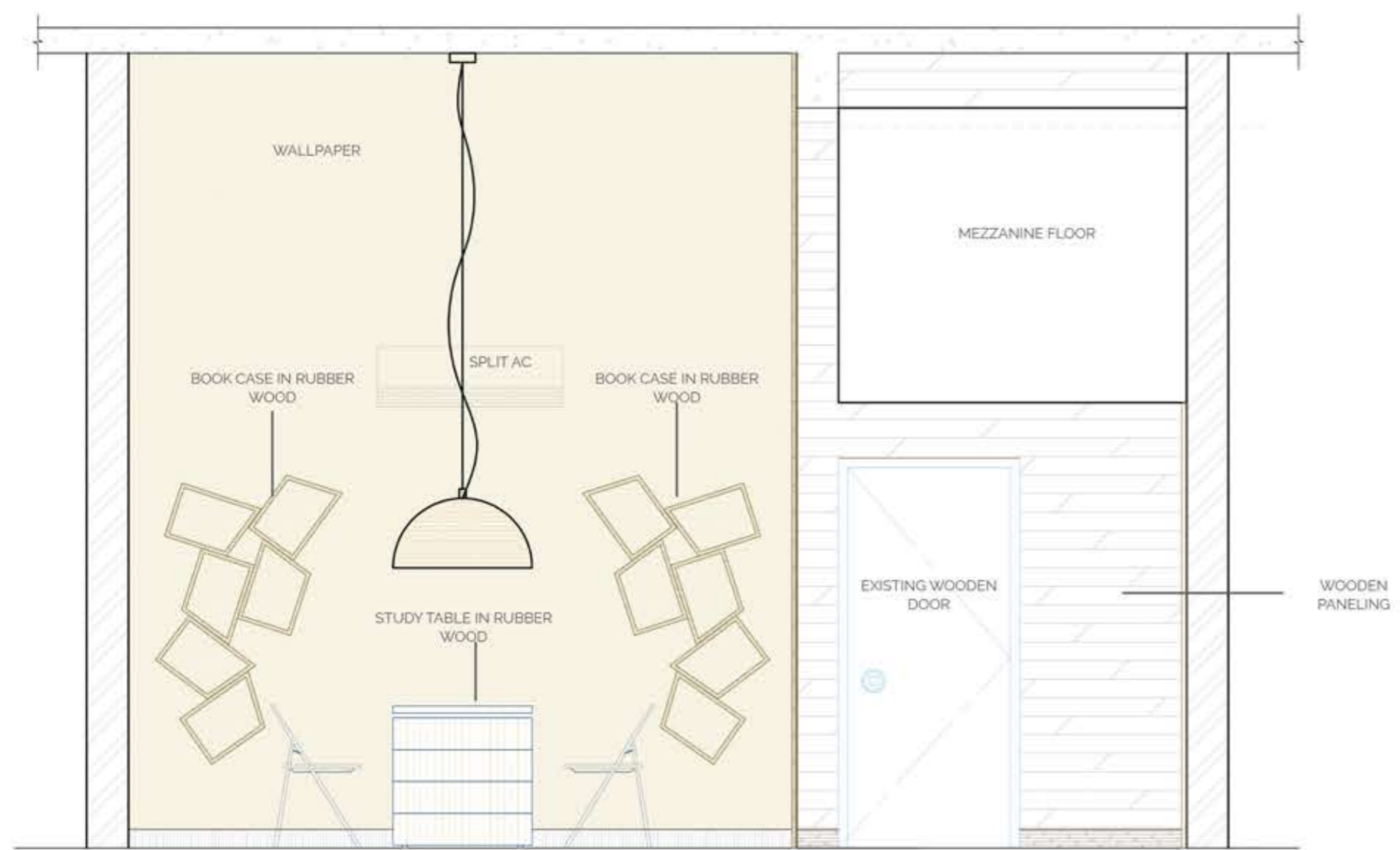


Facing Page: The client's unconventional artistic taste guided the design and decor of the basement, which is envisioned as an entertainment zone.

Left: An eclectic mix of materials enlivens the bathroom space.

Right: A rustic finish together with contemporary forms make this bathroom brighter and a fun place to be.





ELEVATION



Facing Page Left: Contemporary furniture pieces in bright colours enhance the ambience of the bedroom.  
 Facing Page Right: A rock-climbing wall and a ladder are provided in the bedroom to encourage a healthy work-play balance.  
 Top: Shades of blue and green add a touch of calm to this bedroom.





Left: The luxurious interiors are abound with an array of colours, textures, and materials.  
Right: Accent lighting helps impart the interior spaces with a feeling of warmth and elegance  
Facing Page: An installation made out of wooden stumps contrasts with a contemporary chandelier in the dining room.





Facing Page Top: This bedroom features accent elements in teal that brighten up its minimal aesthetics.

Facing Page Bottom: A digital wallpaper acts as an element of interest in the study room.

Top: In the dining room, a blown glass chandelier hangs over a custom-designed dining table with a base made of wooden logs.

---

#### MATERIAL SPECIFICATIONS

---

Flooring: Options Unlimited, Consolidated Carpets Ltd.

Wall: N/A

Lighting: LSI/ Bright Light/Klove

Kitchen: N/A

Bathroom: N/A

Furniture & Decor: group DCA

