



the indian review of  
world furniture,  
interiors and design

85

volume 16 . issue 02 . march - april 2019



INSIDE :

An architect's approach  
towards design should  
remember one fundamental  
principle: a space should  
occupy an occupant.

AR. CHANDRASHEKHAR KANETKAR  
DesignInc Architects/Planners, Mumbai



ir FOCUS : THE WORK PLACE REINVENTED ir PERSONALITY : RAMESH EDWANKAR & ASSOCIATES  
ir PHOTO ESSAY : AR. SANDEEP KHATPE ir GENNEXT : THE ORANGE LANE, PEACOCK LIFE

## technology, less is more or vice-versa

A no-tech zone is a blessing in this digital era, say Ankita Jain Patel and Dhwani Patel, Principle Designers, ADHWA Architecture Interiors, Ahmedabad. This resonates with several design professionals. Alhad Gore, Managing Partner, Beyond Design Architects & Consultants, Mumbai says, "Anything in excess is poison, including technology. We require zones which allow human interaction to happen."

The judicious incorporation of no-tech zones will increasingly be a part of spatial design, says Gurvinder Khurana. On the other hand, Yatin Patel, Mehul Shah and Bimal Desai, have a more realistic approach. They say that a no-tech zone would ultimately mean that none of the products from the IoT world could then be a part of such a space.

Puran Kumar, Principal Architect, Studio PKA, Mumbai also highlights this, saying, "We live in a hyper-connected world where there isn't much room for gap in communication. Workspaces today cannot thrive by being off-the-grid".

Vasanth Packirisamy, Principal Architect, Firki Studio, Noida has a different approach, preferring to use the term "appropriate technology" instead. Anjali Iyer, Designer, Feldman Architecture, San Francisco also believes in appropriate technology that is behind-the-scenes and invisible to the eye.

the loft, mumbai | studio pka, mumbai



microsoft corporation india pvt. ltd., hyderabad | dsp, india

## the green mind-set

While offering comfort, a workplace must consider sustainability. Items such as recycled glass countertops, use of woods from sustainable forestry and products that are recyclable are steps towards a lower carbon footprint. Office spaces should be sustainable in term of recycling, stresses Roman Zitnansky, Architect, Roman Zitnansky Architecture, Bratislava.

Comfort and nourishment go hand in hand, says Debora Emert, Design Director, NCUBE Planning and Design Pvt. Ltd., New Delhi. Steering design towards sustainability introduces mindfulness. She says, "We live in an era where practicing

sustainable design is the need of the hour, while exploiting the use of materials such as wood and felt which mimic employees' natural surroundings."

Amit Aurora and Rahul Bansal, Partners, Group DCA, New Delhi believe in biophilic design strategy to enhance human interaction with nature: green walls help to bring nature indoors and establish a workplace that feels airy and organic. Speaking of the need for physical movement, Swapnil Sawant, Director, Workspere Architects Pvt. Ltd., Mumbai adds that a lot of spaces are now designed with an in-house walking track to enable a little stroll during work hours for muscle relaxation.

project globant, pune | beyond design, mumbai



ga drilling, bratislava | roman zitnansky architecture, bratislava



FOCUS

photos - nora a jakub



#### Design brief and aim

To retain most of the original warehouse structure.

#### How this was accomplished

Ceiling insulation was critical to the project and tackled at the outset to ensure that the air-conditioning system did not waste electricity. A carpenter's worktable was ingeniously repurposed as a conference table, its original form retained to hold open discussions.

The industrial appearance inherited as a part of the old structure was further enhanced with the use of raw wood, rough, unpolished Kota stone and unfinished steel with a basic lacquering to seal off untreated surfaces. Conceived as a box within a box, the office provides engaging spaces for both private and communal use, for brainstorming and focused work alike.

#### How green was my project

Much of the space is naturally ventilated and has flexible work areas.

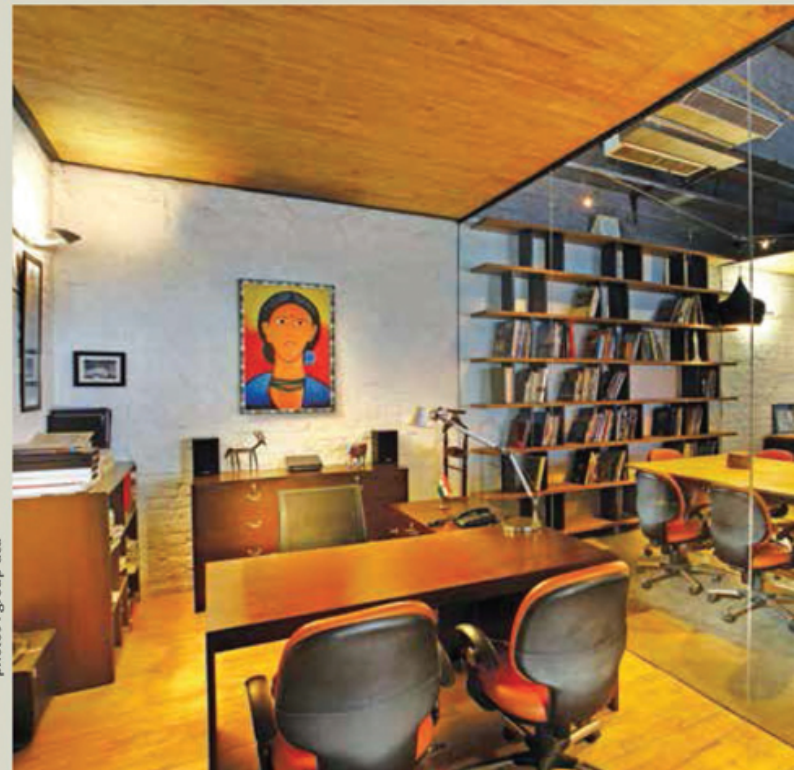
#### Happily ever after

The design successfully employs a layering of spatial hierarchies and fosters interaction.



# GROUP DCA STUDIO, NEW DELHI

DCA Architects, New Delhi



photos : group dca